

Group production - (in tonnes)

December 2024

	2024					2023					YoY Variation	
	Q1	Q2	Q3	Q4	YTD	Q1	Q2	Q3	Q4	YTD	Q4	YTD
Fresh fruit bunches produced												
Own												
Tolan Tiga Group	56 614	70 976	86 806	67 866	282 262	55 355	66 095	86 787	74 584	282 821	-9,01%	-0,20%
Umbul Mas Wisesa Group	34 208	53 907	53 523	38 608	180 246	31 529	46 726	66 028	42 045	186 328	-8,17%	-3,26%
Agro Muko Group	72 903	90 011	90 023	90 759	343 696	67 421	92 546	113 508	88 901	362 376	2,09%	-5,15%
South Sumatra Group	52 616	56 175	67 687	87 302	263 780	39 585	52 474	67 718	58 388	218 165	49,52%	20,91%
Hargy Oil Palms	83 312	83 285	56 125	62 062	284 785	104 459	94 264	79 875	88 742	367 340	-30,06%	-22,47%
Total own	299 653	354 354	354 165	346 597	1 354 769	298 349	352 104	413 917	352 661	1 417 031	-1,72%	-4,39%
Outgrowers												
Tolan Tiga Group	1 516	1 724	2 469	2 302	8 011	1 325	1 909	4 589	2 481	10 304	-7,22%	-22,25%
Umbul Mas Wisesa Group	149	222	263	244	878	137	169	292	214	812	14,10%	8,15%
Agro Muko Group	3 287	4 091	3 714	3 602	14 693	3 369	4 693	5 146	4 148	17 356	-13,17%	-15,34%
South Sumatra Group	7 604	8 463	10 681	13 513	40 260	6 335	8 001	9 396	8 645	32 377	56,32%	24,35%
Hargy Oil Palms	51 580	56 585	41 344	52 456	201 965	64 667	59 381	45 307	63 059	232 414	-16,81%	-13,10%
Total outgrowers	64 135	71 084	58 471	72 117	265 807	75 834	74 152	64 730	78 545	293 261	-8,18%	-9,36%
Total FFB produced	363 788	425 438	412 635	418 714	1 620 575	374 183	426 256	478 647	431 206	1 710 292	-2,90%	-5,25%
Fresh fruit bunches per country												
Total Indonesia	228 896	285 569	315 166	304 195	1133 826	205 057	272 612	353 464	279 405	1110 538	8,87%	2,10%
Total PNG	134 892	139 870	97 469	114 519	486 750	169 126	153 645	125 182	151 801	599 754	-24,56%	-18,84%
Total FFB produced	363 788	425 438	412 635	418 714	1 620 575	374 183	426 256	478 647	431 206	1 710 292	-2,90%	-5,25%
Fresh fruit bunches sold												
Tolan Tiga Group	0	0	0	307	307	0	312	1 946	373	2 631	-17,69%	-88,31%
Umbul Mas Wisesa Group	7 044	10 787	6 272	970	25 073	5 170	8 817	11 669	8 811	34 467	-88,99%	-27,26%
Agro Muko Group	647	485	430	319	1 881	1 587	1 434	1 368	1 101	5 490	-71,00%	-65,74%
South Sumatra Group	0	0	0	0	0	0	0	0	0	0	-	-
Total FFB sold	7 692	11 272	6 701	1 596	27 261	6 757	10 563	14 984	10 284	42 588	-84,48%	-35,99%
Fresh fruit bunches processed												
Tolan Tiga Group	58 129	72 701	89 275	70 255	290 361	56 680	67 692	89 430	76 692	290 494	-8,39%	-0,05%
Umbul Mas Wisesa Group	27 312	43 342	47 515	37 488	155 656	26 496	38 078	54 651	33 448	152 673	12,08%	1,95%
Agro Muko Group	75 542	93 617	93 307	94 041	356 507	69 203	95 805	117 286	91 948	374 242	2,28%	-4,74%
South Sumatra Group	60 220	64 637	78 367	100 815	304 040	45 920	60 474	77 114	67 033	250 542	50,40%	21,35%
Hargy Oil Palms	134 892	139 870	97 469	114 519	486 750	169 126	153 645	125 182	151 801	599 754	-24,56%	-18,84%
Total FFB processed	356 096	414 167	405 934	417 118	1 593 314	367 426	415 693	463 663	420 922	1 667 704	-0,90%	-4,46%
PO extraction rate												
Tolan Tiga Group	22,4%	22,4%	22,6%	22,7%	22,5%	22,6%	22,9%	22,8%	22,3%	22,7%	1,48%	-0,64%
Umbul Mas Wisesa Group	22,2%	22,1%	21,9%	21,3%	21,8%	23,0%	23,3%	22,8%	22,5%	22,9%	-5,38%	-4,68%
Agro Muko Group	22,5%	22,3%	22,5%	22,2%	22,3%	22,7%	23,1%	23,1%	23,1%	23,0%	-3,97%	-2,96%
South Sumatra Group	21,9%	22,5%	22,7%	23,3%	22,7%	23,1%	22,4%	23,0%	23,3%	22,9%	0,05%	-1,05%
Hargy Oil Palms	22,6%	24,2%	23,0%	24,1%	23,5%	25,1%	24,5%	23,9%	24,3%	24,5%	-0,50%	-3,99%
Total PO extraction rate	22,4%	22,9%	22,6%	23,0%	22,7%	23,9%	23,5%	23,2%	23,4%	23,5%	-1,58%	-3,04%
Palm Oil												
Own												
Tolan Tiga Group	12 672	15 865	19 567	15 448	63 551	12 479	15 105	19 811	16 649	64 044	-7,22%	-0,77%
Umbul Mas Wisesa Group	6 020	9 516	10 345	7 947	33 827	6 075	8 844	12 416	7 497	34 832	6,00%	-2,88%
Agro Muko Group	16 297	20 036	20 179	20 146	76 658	14 996	21 195	25 949	20 350	82 490	-1,00%	-7,07%
South Sumatra Group	11 559	12 664	15 427	20 409	60 058	9 157	11 784	15 618	13 644	50 202	49,58%	19,63%
Hargy Oil Palms	18 910	20 178	12 968	15 070	67 125	26 290	22 955	19 214	21 601	90 060	-30,24%	-25,47%
Total own	65 458	78 258	78 485	79 019	301 220	68 996	79 883	93 008	79 742	321 629	-0,91%	-6,35%
Outgrowers												
Tolan Tiga Group	354	405	585	470	1 814	304	377	618	474	1 773	-0,82%	2,29%
Umbul Mas Wisesa Group	30	42	53	46	172	27	31	54	40	152	15,28%	13,16%
Agro Muko Group	672	846	788	709	3 015	729	979	1 103	884	3 695	-19,83%	-18,40%
South Sumatra Group	1 627	1 859	2 376	3 086	8 948	1 429	1 751	2 113	1 970	7 263	56,64%	23,19%
Hargy Oil Palms	11 590	13 606	9 468	12 573	47 236	16 154	14 660	10 663	15 226	56 703	-17,42%	-16,69%
Total outgrowers	14 273	16 758	13 270	16 884	61 185	18 643	17 799	14 551	18 594	69 586	-9,20%	-12,07%
Total Palm Oil	79 731	95 016	91 756	95 902	362 404	87 639	97 682	107 559	98 335	391 215	-2,47%	-7,36%

Palm oil per country	Q1	Q2	Q3	Q4	YTD
Total Indonesia	49 231	61 232	69 320	68 260	248 043
Total PNG	30 500	33 784	22 436	27 642	114 362
Total CPO produced	79 731	95 016	91 756	95 902	362 404

Palm Kernels	Q1	Q2	Q3	Q4	YTD
Own					
Tolan Tiga Group	3 216	3 838	4 846	3 841	15 742
Umbul Mas Wisesa Group	1 171	1 825	2 225	1 549	6 771
Agro Muko Group	3 147	4 161	4 096	4 143	15 547
South Sumatra Group	2 146	2 249	2 315	3 155	9 866
Total own	9 681	12 073	13 483	12 689	47 926

Outgrowers	Q1	Q2	Q3	Q4	YTD
Tolan Tiga Group	76	84	123	101	383
Umbul Mas Wisesa Group	6	8	11	9	34
Agro Muko Group	143	182	160	153	638
South Sumatra Group	293	320	336	455	1 404
Total outgrowers	517	594	631	718	2 459
Total Palm Kernels	10 198	12 667	14 114	13 407	50 385

Palm Kernel Oil	Q1	Q2	Q3	Q4	YTD
Hargy Oil Palms Own	1 687	1 706	1 078	1 112	5 584
Hargy Oil Palms Outgrowers	998	1 146	790	961	3 895
Total Palm Kernel Oil	2 685	2 852	1 868	2 073	9 478

Rubber	Q1	Q2	Q3	Q4	YTD
Own					
Tolan Tiga Group	0	0	0	0	0
Agro Muko	54	5	0	0	59
Total own	54	5	0	0	59

Outgrowers	Q1	Q2	Q3	Q4	YTD
Tolan Tiga Group	0	0	0	0	0
Total Rubber	54	5	0	0	59

Bananas	Q1	Q2	Q3	Q4	YTD
Azagüie	3 068	2 082	2 341	2 431	9 922
Agboville	2 576	1 451	2 456	2 455	8 938
Motobé	1 567	1 934	1 643	1 020	6 165
Lumen	5 316	4 249	4 336	5 488	19 389
Akoudje	1 354	1 524	1 474	2 273	6 624
Total Bananas	13 881	11 241	12 250	13 666	51 038

Q1	Q2	Q3	Q4	YTD
45 195	60 067	77 681	61 508	244 451
42 444	37 615	29 877	36 827	146 763
87 639	97 682	107 559	98 335	391 215

Q1	Q2	Q3	Q4	YTD
3 048	3 630	4 916	4 318	15 912
1 016	1 449	2 260	1 663	6 388
2 650	4 084	4 981	4 077	15 792
1 594	1 998	2 650	2 245	8 487
8 308	11 161	14 808	12 302	46 579

Q1	Q2	Q3	Q4	YTD
65	79	130	111	385
4	5	10	9	28
137	203	227	188	755
240	287	346	313	1 186
446	573	714	620	2 353

Q1	Q2	Q3	Q4	YTD
2 279	1 980	1 597	1 834	7 690
1 343	1 218	900	1 261	4 722
3 623	3 197	2 496	3 096	12 412

Q1	Q2	Q3	Q4	YTD
79	37	28	7	151
218	181	150	127	676
297	217	179	134	827

Q1	Q2	Q3	Q4	YTD
125	16	0	0	141
422	233	179	134	968

Q1	Q2	Q3	Q4	YTD
3 493	2 612	2 647	2 950	11 702
2 082	1 881	1 898	2 142	8 003
2 003	1 958	1 347	1 116	6 424
2 605	2 432	3 619	4 020	12 676
0	164	746	1 261	2 171
10 183	9 047	10 257	11 489	40 976

Q4	YTD
10,98%	1,47%
-24,94%	-22,08%
-2,47%	-7,36%

Q4	YTD
-11,04%	-1,07%
-6,84%	5,99%
1,62%	-1,55%
40,57%	16,25%
3,14%	2,89%

Q4	YTD
-8,75%	-0,29%
-2,31%	20,08%
-18,32%	-15,43%
45,39%	18,40%
15,77%	4,52%
3,75%	2,97%

Q4	YTD
-39,39%	-27,39%
-23,80%	-17,52%
-33,04%	-23,64%

Q4	YTD
-100,00%	-100,00%
-100,00%	-91,27%
-100,00%	-92,87%

Q4	YTD
-	-100,00%
-100,00%	-93,90%

Q4	YTD
-17,60%	-15,21%
14,60%	11,68%
-8,62%	-4,03%
36,51%	52,96%
80,22%	205,13%
18,95%	24,56%

Commodity Price Data
December 2024

Average market prices

Product		YTD Q4/2024	YTD Q4/2023
CPO (CIF Rotterdam)*	in \$/mt	1 084	964
CPO (MDEX)**	in \$/mt	906	833
CPKO (CIF Rotterdam)*	in \$/mt	1 381	981
RSS3 (FOB Singapore)***	in \$/mt	2 277	1 577
Bananas (CFR Europe)****	in €/mt	807	830

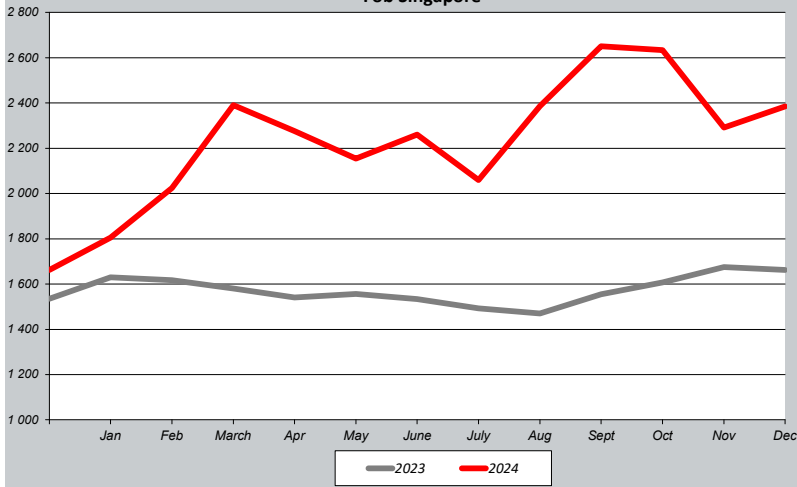
* Oil World price data

** Bursa Malaysia Derivative Exchange price data

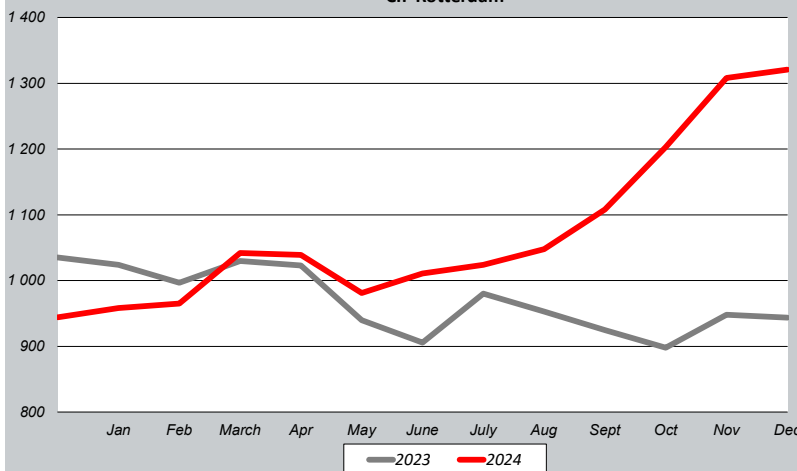
*** World bank commodity price data

**** CIRAD price data (in EUR)

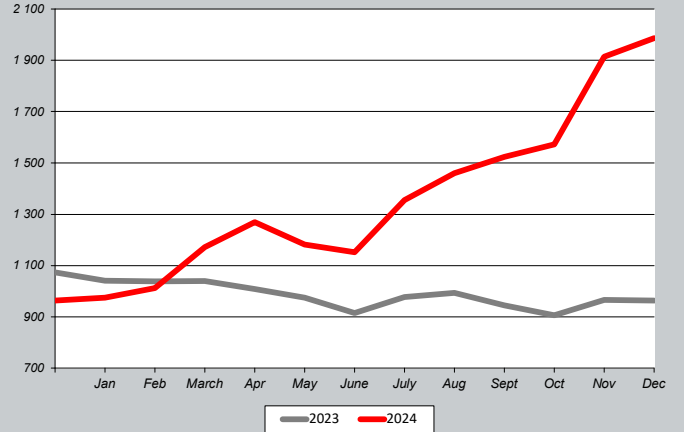
RSS3 in \$/mt
Fob Singapore



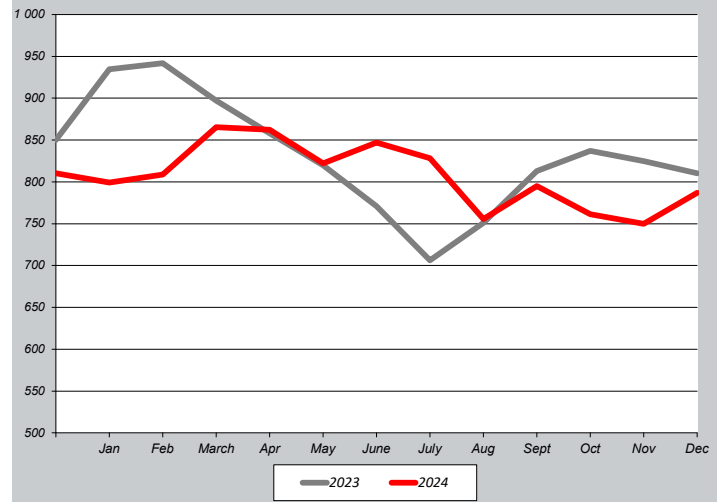
Crude Palm Oil in \$/mt
CIF Rotterdam



Crude Palm Kernel Oil in \$/mt
CIF Rotterdam



Bananas CFR Europe in €/mt



Crude Palm Oil in \$/mt
MDEX

